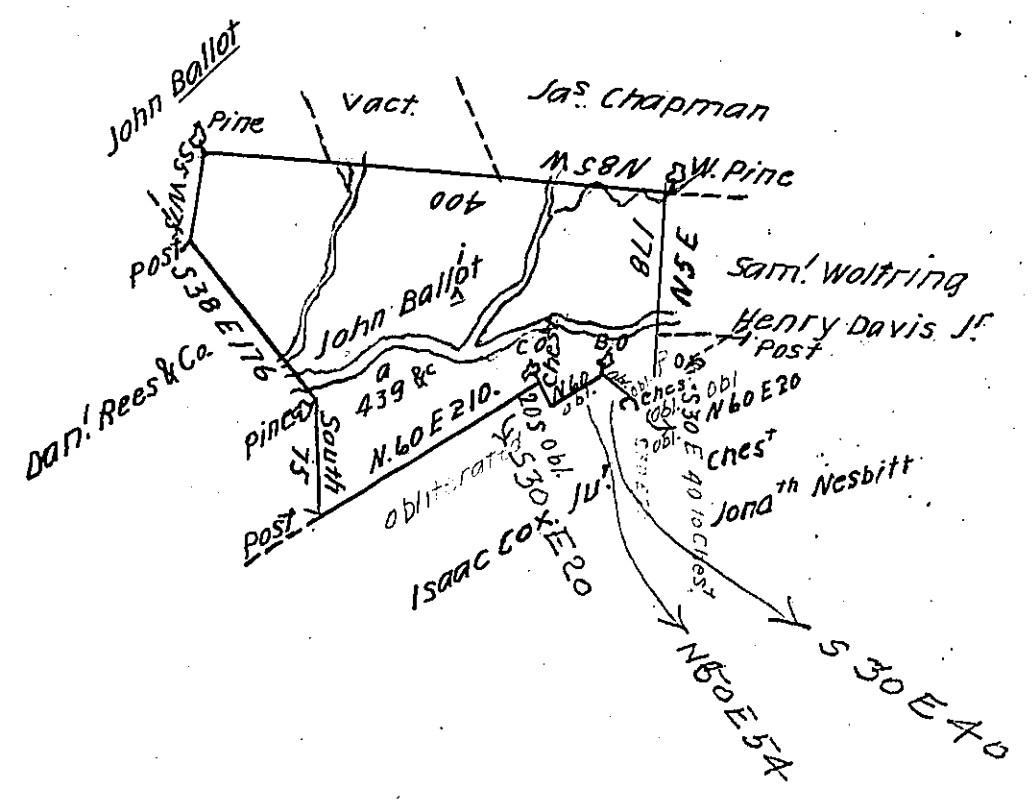


Butler
Luzerne



Draft of a tract of land called _____ Situate in the Counties
 of Northumb^{obl.} Containing four Hundred and thirty Nine acres &
 allowance Surveyed for John o b. l. the 15th day of October 1785 by
 virtue of a Warrant dated the 23^d day of ^{Nov} 1784. Situate partly in Nes-
 copeck & partly in Miffiin Townships. by
 Daniel Brodhead Esq^r } W^m G^{obl.}
 surv^t Gen^l }

IN TESTIMONY that the above is a copy of the original remaining on file in
 the Department of Internal Affairs of Pennsylvania, made
 conformably to an Act of Assembly approved the 16th day of
 February, 1833, I have hereunto set my Hand and caused
 the Seal of said Department to be affixed at Harrisburg,
 this nineteenth day of April, 1911.

Henry Horck
 Secretary of Internal Affairs.